

LEADING TRANSPONDER TECHNOLOGY



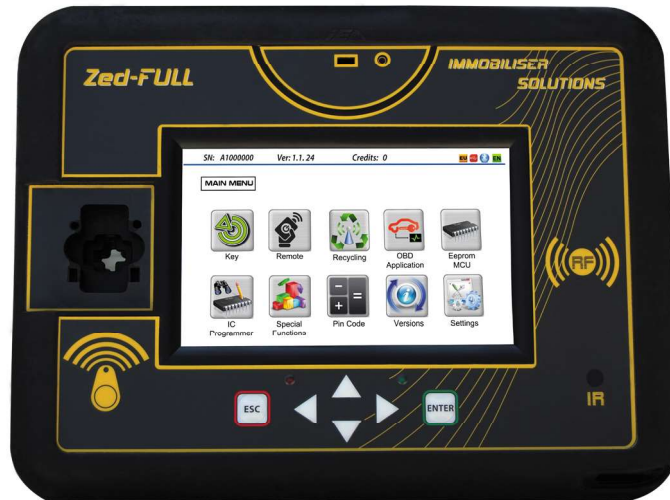
Zed-FULL

INFORMATION BROCHURE

www.istanbulanahtar.com
www.ieakeystore.com
www.zed-full.com

All rights reserved to Istanbul Elektronik Anahtar Guv. Sist. San. Tic. Ltd. Sti.

we build your
dreams
with trust



LEADING TRANSPONDER TECHNOLOGY

All applications in single hardware and single cable. Programming different

and trucks is not a dream with Zed-FULL.





OBD
cables

Spare
pocket

Spare
holder

Spare
elastic
holder



* 7inch HD-TFT Touch Screen; With the high resolution, Zed-FULL. Wide screen will allow us to show all details of the remote key to use during remote cloning, recycling and OBD. Pictures during eeprom applications, transponder types during transponder cloning applications etc...

* Zed-FULL has just one

L Probe cable, you can also check the voltage of car or remote key batteries. Also with same cable you can check the continuity of the wire connections during eeprom applications or any other applica-

SINGLE TOOL FOR ALL CAR BRANDS

SINGLE TOOL FOR 4 DIFFERENT APPLICATIONS

TRANSPONDER CLONING *All type of blank transponders can be used



REMOTE CLONING
*On to original shaped emulators



EEPROM & MCU APPLICATIONS

- *Reading eeprom & Mcu
- Generating key data
- Precoding key
- Pin code extraction
- Over 1500 supported car models

OBD APPLICATION

- *Support for all brands including latest models.
- *12-24 v support



WIDEST PURCHASE OPTIONS **FOR EVERY BUDGET**

*** SOFTWARE PURCHASE**

Every single software can be purchased separately or as a pack.

*** CREDITS**

Pay as you go, full software and software updates are included.

*** LIFS**

Unlimited credits during LIFS period (3 - 6 - 12 months)
Full software and software updates are included

*** DAILY LIFS**

Unlimited credits for 24 hours full software and
software updates are included.
Each day can be activated individually.

*** GROUP LIFS**

Unlimited credits during Group LIFS period just for a particular
car brand (6 - 12 months)
Software updates are included.

*****Maximum flexibility*****

**All options can be applied to the same device separately
or together; some applications can be purchased and
the rest can be used with credits .**

VW, SKODA, SEAT, AUDI KEY PROGRAMMING UP TO LATEST MODELS



VDD CLUSTER SYSTEMS
2013-2014 Years - Vw, Seat, Skoda



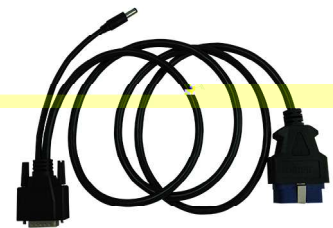
VDO CLUSTER SYSTEMS
2010-2013 Years - Vw, Seat, Skoda

CAN BUS AND K-LINE ECUS
2000-2010 Years Vw, Skoda, Seat, Audi

MAGNETTI MARELLI
2010-2014 Years - Vw, Seat, Skoda



EZS-KESSY SYSTEMS



FIAT, ALFA ROMEO, LANCIA OBD

NO MORE REMOVING BOX

NO MORE SOLDERING-DESOLDERING

PIN CODE EXTRACTION, PRECODING VIA OBD

**PROGRAMMING EMULATOR REMOTES AND IEA MADE REMOTES
(ORIGINAL SHAPED)**

BOTH 48 AND 46 TRANSPONDER BASED FIAT CARS.



MOTORBIKE VIA SOCKET

VESPA-PIAGGIO-GILERA

- *NO MORE DIGGING HOLE ON THE BOX
- *NO MORE SOLDERING-DESOLDERING
- *SIMPLE AS PLUGGING CABLES TO THE PINS



MO
MA
SU
HY
CHE

BE
EN
AT
DAI
OLE

SAC
SHI, NISS
GUAR
DILLAS

EEPROM & MCU APPLICATIONS

- *Built in Eeprom and Mcu Programmer.
- *Various models are supported(Over 1500 different cars).
- *Pin code reading.
- *Precoding transponder.
- *Programming transponder to start the car.
- *Programming emulator remotes.



- *Stand alone use, no need for pc and programmer.
- *Widest options for blank transponder selection.
- *Option to use via pc software.
- *Ability to save files to Pc.
- *Detailed pictures of the immo units and application modules.
- *Continuous updates



FIAT, ALFA ROMEO, LANCIA ECU VIRGIN & EEPROM READ



****THROUGH PINS USING ORIGINAL SOCKET***

"M.MARELLI"; 5SF3(HW300), 5SF(HW>200), 5NF_Tx

****THROUGH PINS USING Zed-FULL UNIVERSAL CABLE***

"M.MARELLI "; 59F(HW<100), 59F(HW002), 59F(HW>100), 5AF(HW>100), 4AF(HW>100), 4EF(HW>100), 5SF3(HW300), 5SF(HW>200), 5NF_Tx, MJD6F3, MJD6JF, 8GMF, 8F3.



"BOSCH "; ME7.3.1(253,254)- ME7.3(313,314)- EDC15



****THROUGH OBD***

"M.MARELLI "; 59F(HW<100), 59F(HW002), 59F(HW>100), 5AF(HW>100), 4AF(HW>100), 4EF(HW>100), 5SF3(HW300), 5SF(HW>200), 5NF_Tx, MJD6F3, MJD6JF, 8GMF, 8F3.

"BOSCH "; EDC15.

d-NET connection settings
2- Zed-FULL Activation & Synchronisation

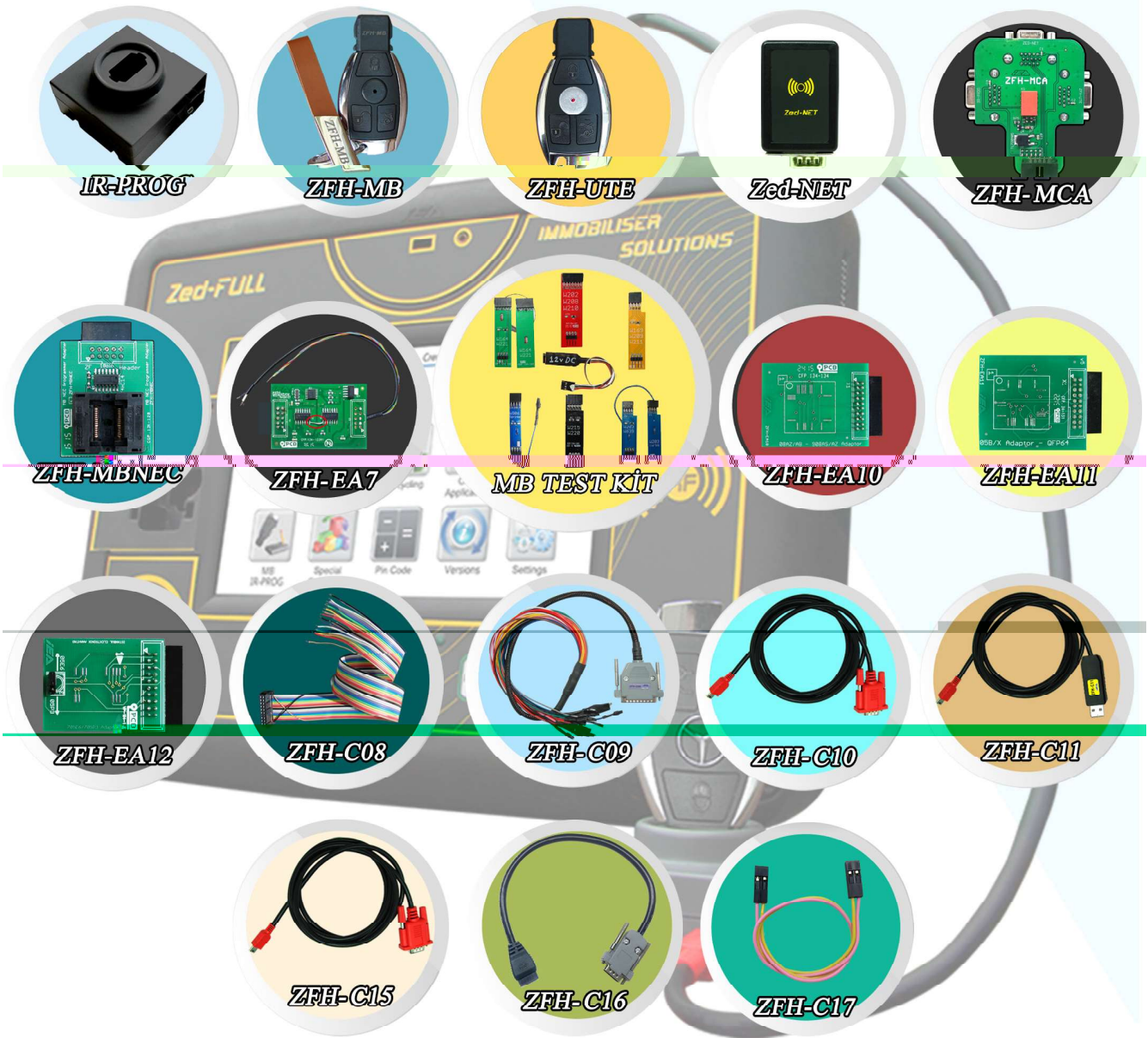
48 Transponder Cloning



Some 48 transponder can be cloned

s transponder.

- As long as the working key can be read with IR-PROG, Zed-FULL can program a new key for all Mercedes-Benz vehicles between 1998-2015 using Mercedes-Benz BGA/FBS3 kit.(ZFH-MCA, Zed-NET, IR-PROG, ZFH-UTE required).
 - It can also generate new key even if all keys are lost with the help of ZFH-UTE (emulator /sniffer key), ZFH-MCA (multi connection adapter), Zed-NET (wifi module) and IR-PROG.
 - Easy and safe way of doing IR Mercedes keys.
 - No Pc required, just use MCU reader adapters.
 - No extra key calculator downloading (using ZFH-MB TEST KIT or ZFH-UTE or OBD2).
- For further details please see “Mercedes-Benz Application Guide” document.



...P, KIA, LAND R...
...RSCHÉ, RANGE R...

...ote key unlocking fea...
...rther details please see

Remote Key Recycling

doc...

MAIN MENU > Recycling > PCF79XX Remote Unlock

...XX Remote
...ng Adapter

ZFH-C07 - 10 Pin Cable

ZFH-C12 Remote
Unlocking Cable

BMW CAS 2, 3, 3+ PROGRAMMING THROUGH PINS

***THROUGH PINS USING Zed-FULL ZFH-C04 CABLE**

- This application is good for working on the bench, all these applications can be done via OBD as well.
- 2005 to 2011 CAS2, CAS3, CAS3+ systems
- Easy and fast programming with visual step by step instructions.
- Original and after market remotes can be programmed.
- Used remotes can be unlocked(used with Zed-FULL only)



Zed-FULL Mifare Reading & Cloning



- * Read 13,56 mhz Mifare cards.
- * Read and Clone Kale X5 Automats.
- * Read and Clone Kale X5 Access Cards.
- * Produce Kale X5 Access Cards.

Identify cards bellow;

- * Mifare Clasic 1K,
- * Mifare Clasic 4K,
- * Mifare Ultralight,
- * Mifare Desfire 2K,
- * Mifare Desfire 4K,
- * Mifare Desfire 8K,
- * Mifare Plus.



LO, ALBEA, PALIO, PUNTO
 1 BUTTON FLICK REMOTE KEY
 433 MHZ KEY PROFILE: SIP22

ID: 48
 FIAT: DOBLO, ALBEA, PALIO, PUNTO
 1 BUTTON BLUE REMOTE KEY
 433 MHZ KEY PROFILE: SIP22

ID: 48
 FIAT: DOBLO, ALBEA, PALIO, PUNTO
 1 BUTTON BLACK REMOTE KEY
 433 MHZ KEY PROFILE: SIP22



FIR106 (EMULATOR 2)

*FIAT: LINEA, BRAVO, STILO,
 *Citroen: Jumper-Delay *Peugeot: Boxer
 *Lancia-Ypsilon *Iveco: Daily-Eurocargo
 3 BUTTON - ID:48 - 433MHZ

FIR107 (EMULATOR 3)

*FIAT: BRAVO, DUCATO, NEW DOBLO, FIORINO
 GRANDE PUNTO, 500, 500L, *Alfa Romeo: Mito
 *Citroen: Nemo *Peugeot: Bipper Tepe
 3 BUTTON - ID: 46 (PCF7946-47) - 433MHZ

IEA PRODUCTION REMOTE KEYS



AUR115E

ID: 46
IEA AUDI SMART REMOTE KEY
434 MHZ - WITHOUT KEYLESSGO



AUB115E

IEA AUDI SMART REMOTE BOARD
434 MHZ - WITHOUT KEYLESSGO



AUR116E

ID: 46
IEA AUDI SMART REMOTE KEY
868 MHZ - WITHOUT KEYLESSGO



AUB116E

IEA AUDI SMART REMOTE BOARD
868 MHZ - WITHOUT KEYLESSGO



AUR117E

ID: 46
IEA AUDI SMART REMOTE KEY
315 MHZ - WITHOUT KEYLESSGO



AUB117E

IEA AUDI SMART REMOTE BOARD
315 MHZ - WITHOUT KEYLESSGO



AUR118E

ID: 46 - IEA AUDI SMART REMOTE KEY
434 MHZ - WITHOUT KEYLESS GO
WITH LONG KEY METAL



AUR119E

ID: 46 - IEA AUDI SMART REMOTE KEY
868 MHZ - WITHOUT KEYLESS GO
WITH LONG KEY METAL



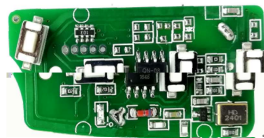
AUR120E

ID: 46 - IEA AUDI SMART REMOTE KEY
315 MHZ - WITHOUT KEYLESS GO
WITH LONG KEY METAL



BMR102+

ID: 33
IEA BMW (1-3-5-E-X) SERIES
433MHZ 3 BUTTON FLICK REMOTE KEY
F CLASS SHAPE



BMB102+

IEA BMW REMOTE BOARD
(1-3-5-E-X) SERIES - 433MHZ



BMR104+

ID: 46
IEA BMW CAS2 (3-5) SERIES 868MHZ
3 BUTTON REMOTE KEY CAS4
SHAPE MODIFIED



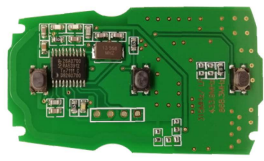
BMB104+

IEA BMW REMOTE BOARD
CAS2 (3-5) SERIES - 868MHZ



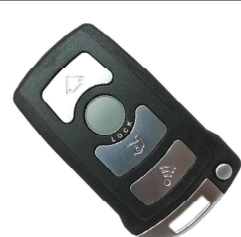
BMR105+

ID: 46
IEA BMW (3-5-X) SERIES 868MHZ
SMART REMOTE WITH EMERGENCY KEY



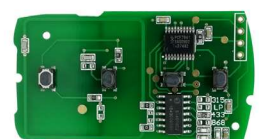
BMB105+

IEA BMW SMART REMOTE BOARD
(3-5-X) SERIES 868MHZ



BMR106+

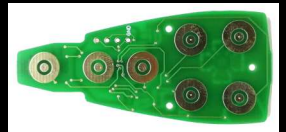
ID: 46 - IEA BMW 7 SERIES
4 BUTTON SMART REMOTE - 434MHZ
(WITHOUT BATTERY) WITH EMERGENCY KEY



BMB106+

IEA BMW 4 BUTTON SMART
REMOTE BOARD 7 SERIES - 434MHZ

● For Zed-FULL applications use only this product.



● For Zed-FULL applications use only this product.
●

IEA PRODUCTION REMOTE KEYS



CPR120+

ID: 46
IEA PEUGEOT-CITROEN 2-3 BUTTON
433MHZ - PCF7941
UNLOCKABLE(ASK->FSK)



CPR121+

ID: 46
IEA PEUGEOT-CITROEN
2 BUTTON 433MHZ PCF7941
UNLOCKABLE(ASK->FSK)

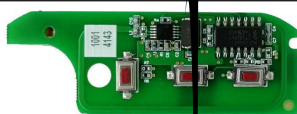


CPR122+

ID: 46
PEUGEOT-CITROEN
3 BUTTON 433MHZ PCF7941
UNLOCKABLE(ASK->FSK)

FIB10

IEA DOBLO D LPHI
HITAG2 434 MHZ FLICK REMOTE BOARD
(WITHOUT BATTERY)



All products without ● or ●, can be programmed with any diagnostic tool.



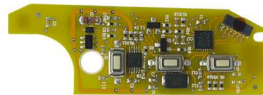
FIB105Z

IEA FIAT 1 BUTTON EMULATOR
*FIAT: DOBLO,ALBEA,PUNTO,PALIO
REMOTE BOARD - 433 MHZ
(FIR105Z BOARD)



FIB106Z

FIAT 2-3 BUTTON EMULATOR LINEA
REMOTE BOARD - 433 MHZ
(FIR106Z BOARD)



FIB107Z

FIAT FIAT 500L EMULATOR 3
REMOTE BOARD - 433 MHZ
(FIR107Z BOARD)

IEA FIAT ALFA ROMEO 3 BUTTON
REMOTE BOARD - 433 MHZ
(FIR105Z BOARD)

IEA PRODUCTION REMOTE KEYS



FIR119+

ID: 46
IEA FIAT FREEMONT
4+1 BUTTON SMART REMOTE
433 MHZ HITAG2 PCF7945A
(WITH BLADE) (WITHOUT BATTERY)



FIB119+

IEA FIAT FREEMONT
4+1 BUTTON SMART BOARD
433 MHZ HITAG2 PCF7945A



FIR129E

ID: 48
FIAT EGEA 3 BUTTON MEGAMOS AES
FLICK REMOTE - 433 MHZ



FIB129E

FIAT EGEA 4 BUTTON REMOTE BOARD
433 MHZ
(FIR129E BOARD)



FOR104+

IEA-FORD C-MAX 3 BUTTON
FLICK REMOTE 433 MHZ
(WITH KEY BLADE)(WITHOUT BATTERY)



FOB104+

IEA-FORD C-MAX 3 BUTTON
FLICK REMOTE BOARD 433 MHZ
(ONLY PCB BOARD)



FOR120+

IEA FORD FUSION
3+1 BUTTON 315 MHZ PCF7945
FLICK REMOTE
(WITH KEY BLADE) (WITHOUT BATTERY)

IEA FORD FUSION
3+1 BUTTON 315 MHZ PCF7945
FLICK B



7945A FLICK REMOTE
(WITH KEY BLADE)(WITHOUT BATTERY)



FOB121+

IEA FORD 4+1 BUTTON
434 MHZ PCF7945A
FLICK BOARD



R



FOR123+

IEA FORD EDGE
4+1 BUTTON 315MHZ PCF7945
KEYLESSGO REMOTE
(WITH KEY BLADE) (WITHOUT BATTERY)



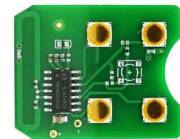
FOB123+

IEA FORD FUSION
4+1 BUTTON 315MHZ PCF7945
KEYLESSGO BOARD



FOR124+

IEA FORD 150
3+1 BUTTON 315MHZ PCF7945A
NON-FLICK REMOTE
(WITH KEY BLADE)(WITHOUT BATTERY)



FOB124+

IEA FORD 150
3+1 BUTTON 315MHZ PCF7945A
NON-FLICK BOARD



HOR112+

ID: 46
IEA HONDA 2012+ AFTER 3 BUTTON
FLICK REMOTE - 433 MHZ



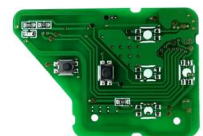
HOB112+

ID: 46
IEA HONDA 2012+ AFTER 3 BUTTON
REMOTE BOARD - 433 MHZ



HOR113+

ID: 46
IEA HONDA 2012+ AFTER 2 BUTTON
FLICK REMOTE - 433 MHZ

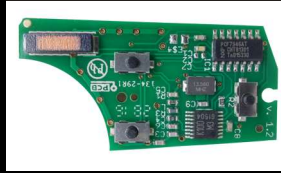


HOB113+

ID: 46
IEA HONDA 2012+ AFTER 2 BUTTON
REMOTE BOARD - 433 MHZ



NIB111+



IEA PRODUCTION REMOTE KEYS



RNR102E

ID: 46
IEA RENAULT SYMBOL, CLIO II, KANGOO II
1 BUTTON REMOTE KEY
PCF7946 - 433MHZ KEY PROFILE: NE73



RNB102E

RENAULT: SYMBOL, CLIO II, KANGOO II
1 BUTTON REMOTE BOARD
PCF7946 - 433MHZ



RNR103E

IEA RENAULT MASTER
2 BUTTON PCF7946 REMOTE
(WITHOUT BATTERY)



RNB103E

IEA RENAULT MASTER
2 BUTTON PCF7946
(ONLY PCB BOARD)



RNR105E

ID: 46
IEA RENAULT TRAFFIC, MASTER
OPEL MOVANO REMOTE
433 MHZ 6
(WITHOUT BATTERY)



RNB105E

IEA RENAULT TRAFFIC, MASTER
OPEL MOVANO
433 MHZ PCF7946
(ONLY PCBBOARD)



RNR108E

ID: 46
IEA RENAULT CLIO II, KANGOO II
REMOTE PCF7946 433 MHZ
(WITHOUT BATTERY)



RNB108E

IEA RENAULT CLIO II, KANGOO II
REMOTE PCF7946 433 MHZ
(ONLY PCB BOARD)



RNR109E

ID: 46
IEA RENAULT CLIO III, KANGOO III
REMOTE PCF7947 433 MHZ
(WITHOUT BATTERY)



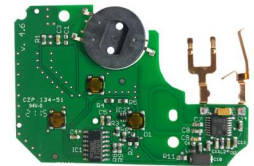
RNB109E

IEA RENAULT CLIO III, KANGOO III
REMOTE PCF7947 433 MHZ
(ONLY PCB BOARD)



RNR114E

ID: 46
IEA RENAULT MEGANE II
SMART REMOTE PCF7947
(WITHOUT BATTERY)



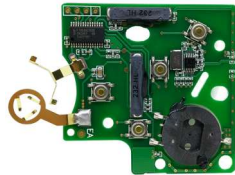
RNB114E

IEA RENAULT MEGANE II
SMART BOARD
(ONLY PCB BOARD)



RNR115+

ID: 46
IEA-RENAULT MEGANE III, FLUENCE,
LATITUDE CARD KEYLESS GO
PCF7952A 434 MHZ
(WITHOUT BATTERY)



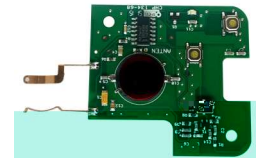
RNB115+

IEA RENAULT MEGANE III, FLUENCE,
LATITUDE 4 BUTTON KEYLESS GO
PCF7952A 434 MHZ
CARD BOARD



RNR119E

ID: 46
IEA LAGUNA II
SMART REMOTE PCF7947
(WITHOUT BATTERY)



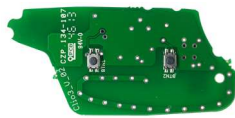
RNB119E

IEA LAGUNA II
SMART BOARD PCF7947
(ONLY PCB BOARD)



RNR125E

ID: 46
IEA RENAULT CLIO III, KANGOO III,
MODUS III 2 BUTTON
FLICK REMOTE PCF7947 433 MHZ
(WITHOUT BATTERY)



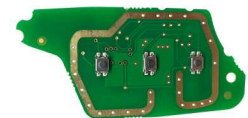
RNB125E

IEA RENAULT CLIO III, KANGOO III,
MODUS III 2 BUTTON
FLICK BOARD PCF7947 433 MHZ
(ONLY PCB BOARD)



RNR126E

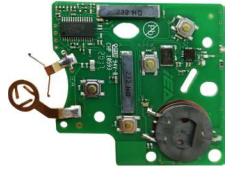
ID: 46
IEA RENAULT FLUENCE 3 BUTTON
FLICK REMOTE PCF7961 433 MHZ
(WITHOUT BATTERY)



RNB126E

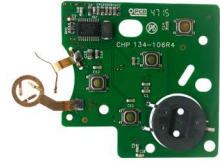
IEA RENAULT FLUENCE 3 BUTTON
BOARD PCF7961 433 MHZ
(RNR126's BOARD)

IEA PRODUCTION REMOTE KEYS



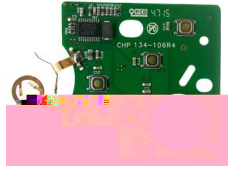
RNB133+

IEA RENAULT CLIO IV 4 BUTTON
KEYLESSGO PCF7953A 434 MHZ
CARD BOARD
(WITHOUT BATTERY) (RNR133+)



RNB143E

IEA RENAULT MEGANE 3
CARD KEY 433 MHZ PCF7961ATT
NON-KEYLESSGO BOARD
(ONLY PCB BOARD)



RNB144E

IEA RENAULT CLIO IV
CARD KEY 433 MHZ PCF7961
NON-KEYLESSGO
(ONLY PCB BOARD)

RNB144A

IEA RENAULT
2 BUTTON PCF7961ATT AES
REMOTE BOARD
(ONLY PCB BOARD)



Zed-FULL ADDITIONAL ACCESSORIES



**"ZFH-IRPROG"
READ & WRITE
MERCEDES-BENZ KEY MODULE**



**"ZFH-MB"
MERCEDES-BENZ SNIFFER**



**"ZFH-UTE"
UNIVERSAL TRANSPONDER
EMULATOR**



**"Zed-NET"
Zed-FULL Wi-Fi MODULE**



**"TPX4 CLONER"
STANDALONE ID:46 CLONING
(OFFLINE)**



**"ZFH48 SNIFFER"
48 CLONING SNIFFER**



**"ZFH46-SNIFFER"
46 CLONING SNIFFER**



**"ZFH46-CARD"
FLUENCE -MEGANE 3 - SCENIC 3
SNIFFER**



**"ZFHC-PROBE"
VOLTMETER & SHORT CIRCUIT**



**"ZFH-CP"
HOLDEN-COMMODORE PIN**



**"ZFHC-USB"
USB CABLE**



**"ZFHC-OB2"
MAIN OBD2 CABLE**



**"ZFHC-HKRP"
HYUNDAI-KIA REMOTE
PROG CABLE**



**"ZFHC-EA"
VAG EXTERNAL ANTENNA**



**"ZFH-EMI"
FIAT 48 SYSTEM
EMULATOR CABLE**



**"ZFH-C01"
TPX-4 CLONER
CONNECTION CABLE**



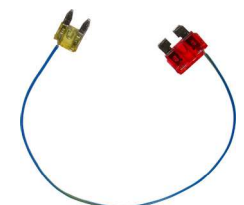
**"ZFH-C02P"
VAG UDS CLUSTER
CONNECTION CABLE**



**"ZFH-C03"
MOTORBIKE ECU
CONNECTION CABLE**



**"ZFH-C04"
BMW CAS UNIT
CONNECTION CABLE**



**"ZFH-C05"
VAG SHORT CIRCUIT CABLE**



**"ZFH-C06"
RENAULT
FLUENCE -MEGANE 3 - SCENIC 3
BCM CONNECTION CABLE**



**"ZFH-C07"
EEPROM & MCU APPLICATION
10 PIN CONNECTION CABLE**



**"ZFH-C07-2"
EEPROM & MCU APPLICATION
10 PIN CONNECTION CABLE**



**"ZFH-C08"
EEPROM & MCU APPLICATION
20 PIN CONNECTION CABLE**



**"ZFH-C08-2"
EEPROM & MCU APPLICATION
20 PIN CONNECTION CABLE**



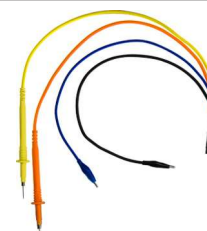
**"ZFH-C09"
UNIVERSAL CABLE**



**"ZFH-C10"
IR-PROG-Zed-FULL
CONNECTION CABLE**



**"ZFH-C11"
IR-PROG-PC
CONNECTION CABLE**



**"ZFH-C12"
REMOTE UNLOCKING
CABLE**



**"ZFH-C13"
DAF TRUCK ROUND OBD2 CABLE**

Zed-FULL ADDITIONAL ACCESSORIES



"ZFH-C14"
DAF TRUCK POWER CABLE



"ZFH-C15"
ZFH-UTE CONNECTION CABLE



"ZFH-C16"
ZFH-MCA CABLE



"ZFH-C17"
GATEWAY CONNECTION
2 PINS CABLE (PINK + YELLOW)



"ZFH-C18"
CHRYSLER 2018+ DASHBOARD
AND STAR CONNECTOR CABLE



"ZFH-MBCA"
ADAPTER FOR
EZS READING APPLICATIONS.



"ZFH-MBC1"
SOCKET CABLE
FOR W204-W207-W212(old)



"ZFH-MBC2"
SOCKET CABLE
FOR W164-W251



"ZFH-MBC3"
SOCKET CABLE
FOR W216-W221



"ZFH-MBC4"
SOCKET CABLE
FOR W212(new)



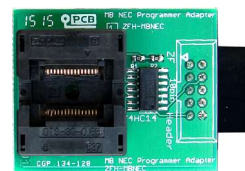
"ZFH-MBC5"
SOCKET CABLE
FOR W166-W246



ZFH-MCA
MULTI CONNECTION ADAPTER



"ZFH-PCF79XX"
REMOTE UNLOCKING
ADAPTER



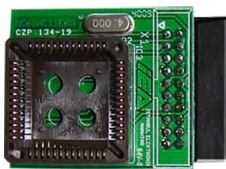
"ZFH-MBNEC"
MERCEDES-BENZ KEY
MCU NEC ADAPTER



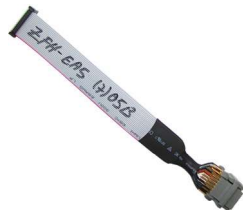
"ZFH-EA1"
8 PIN EEPROM ADAPTER



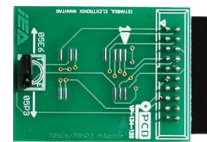
"ZFH-EA3"
52 PIN (EWS-3) MCU ADAPTER



"ZFH-EA4"
52 PIN MCU ADAPTER



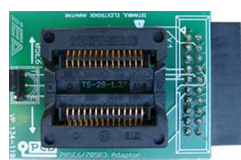
"ZFH-EA5"
52 PIN MCU ADAPTER



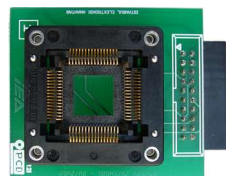
"ZFH-EA6"
28 PINS MCU ADAPTER
(05E6/05P3)



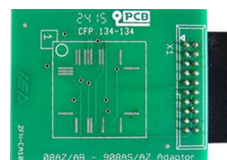
"ZFH-EA7"
SECURITY MCU ADAPTER
(912/9S12/9S12X)



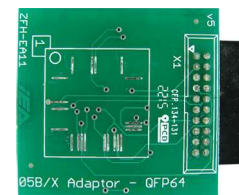
"ZFH-EA8"
28 PINS MCU ADAPTER
WITH SOCKET
(05E6/05P3)



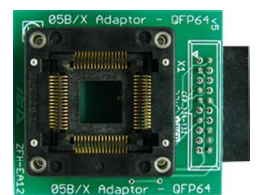
"ZFH-EA9"
64 PINS MCU ADAPTER
WITH SOCKET



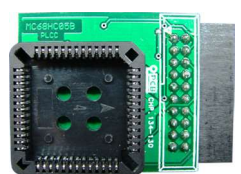
"ZFH-EA10"
64 PINS MCU PCB ADAPTER
08AZ/AB-908AS/AZ



"ZFH-EA11"
64 PINS MCU PCB ADAPTER
QFP64(05B/X)



"ZFH-EA12"
64 PINS MCU ADAPTER
WITH SOCKET
QFP64(05B/X)



"ZFH-EA13"
52 PIN MCU ADAPTER
WITH SOCKET



"ZFH-5SF"
FIAT SYSTEM ECU
VIRGINISE CABLE
ECU TYPE: 5SF3(HW>200)



"ZFH-5SF3"
FIAT SYSTEM ECU
VIRGINISE CABLE
ECU TYPE: 5SF3(HW300)



"ZFH-5NF"
FIAT SYSTEM ECU
VIRGINISE CABLE
ECU TYPE: 5NF



"ZFH-ME73"
FIAT SYSTEM ECU
VIRGINISE CABLE
ECU TYPE: ME73(313-314)

Zed-FULL ADDITIONAL ACCESSORIES



"ZFH-ME731"
FIAT SYSTEM ECU
VIRGINISE CABLE
 ECU TYPE: ME731(253-254)



"ZFH-DONGLE1"
"HOLDEN" OBD APPLICATION
DONGLE



"ZFH-DONGLE2"
"CHRYSLER" OBD APPLICATION
DONGLE



"ZFH-DONGLE3"
"RENAULT MEGANE-1 SCENIC-1"
OBD APPLICATION DONGLE



"ZFH-DONGLE4"
"MITSUBISHI K-LINE"
OBD APPLICATION DONGLE



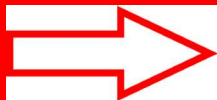
"ZFH-DONGLE5"
BMW (CAS1,CAS2,CAS3,CAS3+)
OBD APPLICATION DONGLE



"ZFH-EWS3"
BMW EWS OBD
APPLICATION DONGLE

<p>64 PIN MICU PCB ADAPTER QFP64-908AS/AZ</p>	<p>64 PIN MICU PCB ADAPTER QFP64(05B/X)</p>	<p>WITH SOCKET QFP64(05B/X)</p>
---	---	-------------------------------------

the module numbers in Zed-FULL that you can read and decode with this adapter, are listed below.

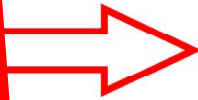


The module numbers in Zed-FULL that you can read and decode with this adapter, are listed below.

Module ;

Mini Cooper EWS3 ,

[MC68HC11EA9(0D46J-1D47J) 52pin]

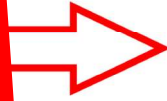


Used to read 52-
of Cir

The module numbers listed
you can read and deal with
are listed below.

6-8-1 - 62-67 - 106

MC68HC05B6 (F D33
MC68HC05B3 (11)



Used to read 28
of Cir

The module numbers listed
you can read and deal with
are listed below.

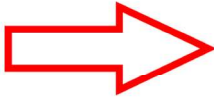
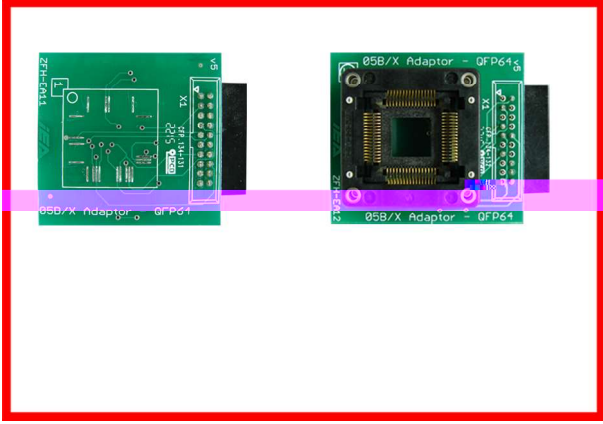
9-74-

MC68HC05

Used to read MCU

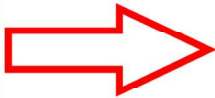
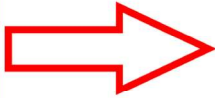
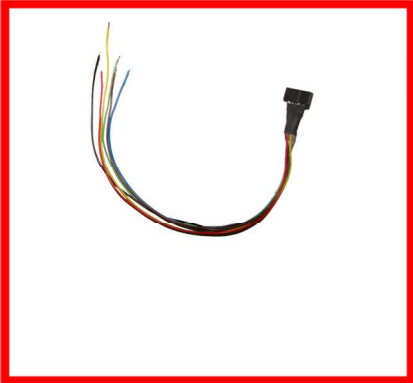
, are listed below.

	Module ;
108	- 202 (CAS1) - 203 (CAS2) - 204
247	- 248 (CAS3 Type2) - 256 (
	- 205



Used to read 64-Pin MCUs
(Out of Circuit)

The module numbers in Zed





LINCOLN

mazda

MERCURY

Mercedes-Benz



MITSUBISHI

Oldsmobile.

PEUGEOT



PONTIAC.



SATURN.

SEAT



SUBARU



SUZUKI



TOYOTA



VAUXHALL





LEADING TRANSPONDER TECHNOLOGY



İstanbul Elektronik Anahtar

İkitelli OSB. Mah. Tumsan 1.Kisim
6.Blok Sok. No:6
Basakşehir / İstanbul / Turkey

Phone: +90 212 485 56 56
Fax: +90 212 485 40 29

Email: info@istanbulanahtar.com
<http://www.istanbulanahtar.com>
<http://www.ieakeystore.com>